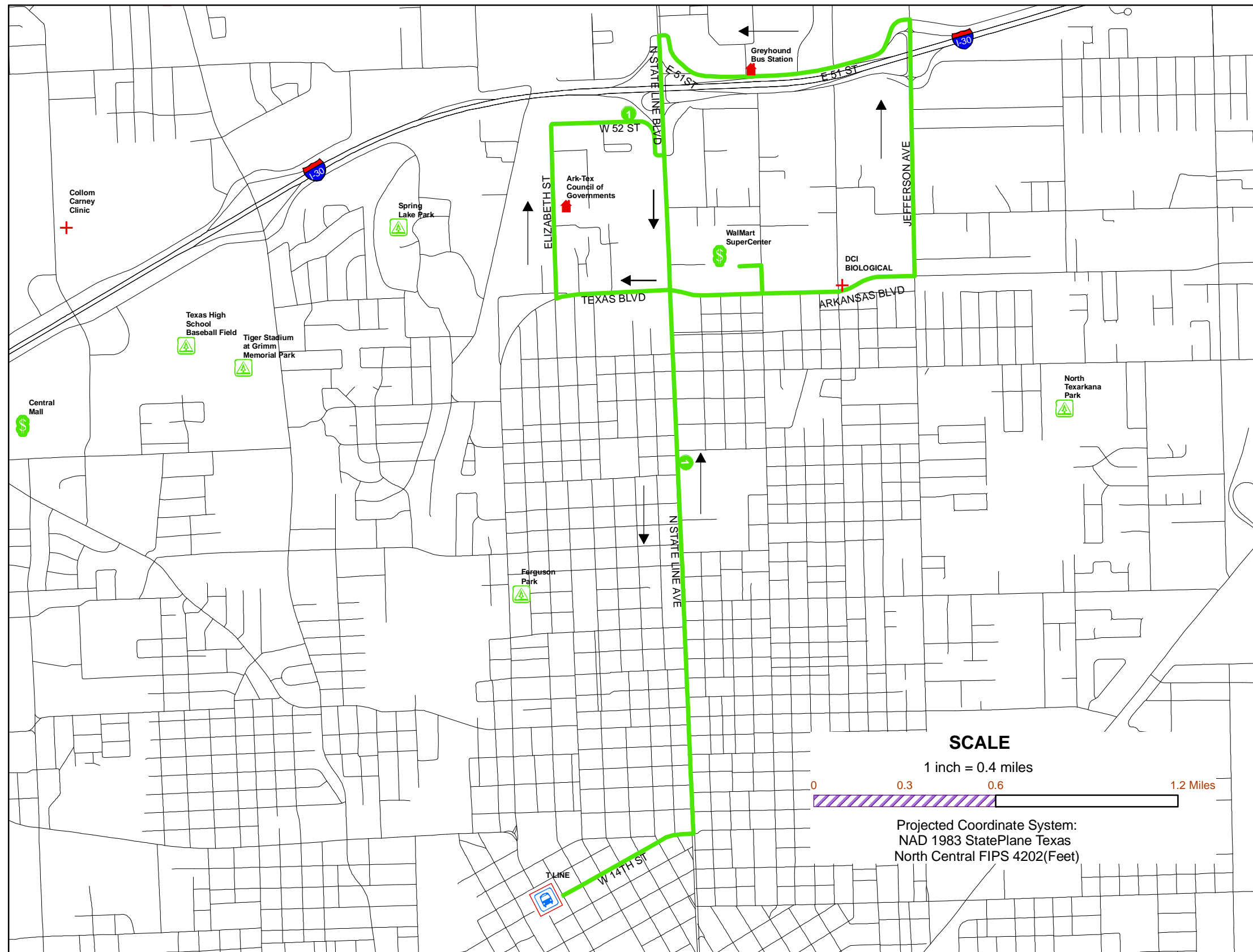




Route 1 From Transfer Station at 14th St and Texas Blvd



Route 1 Legend

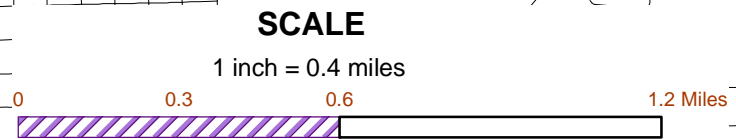
Landmarks Class

- Airport
- Building
- Medical
- Park
- Shopping
- TRANSFER FACILITY
- Route 1

ROADS

- INTERSTATE HIGHWAY
- US HIGHWAY
- CITY STREET
- FRONTAGE ROAD

Arrow = Direction of Travel



Projected Coordinate System:
NAD 1983 StatePlane Texas
North Central FIPS 4202(Feet)



Ark-Tex Council of
Governments
GIS Department
903-832-8636
26 August 2011
mc